

APPLICATION

Nutshell Filter

OVERVIEW

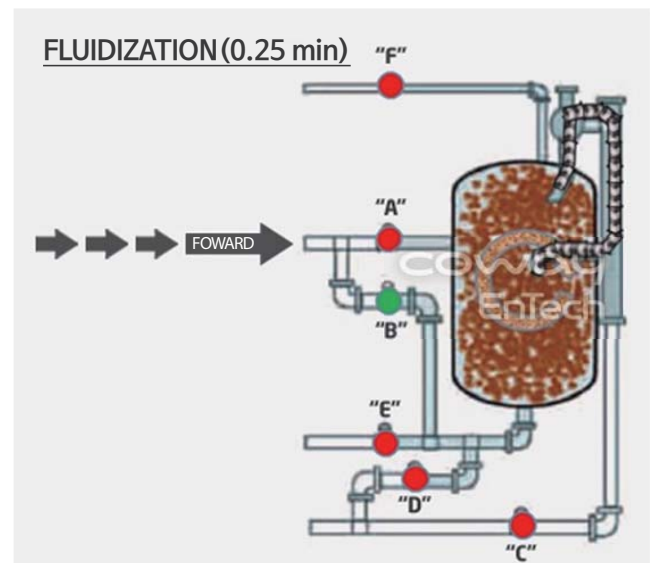
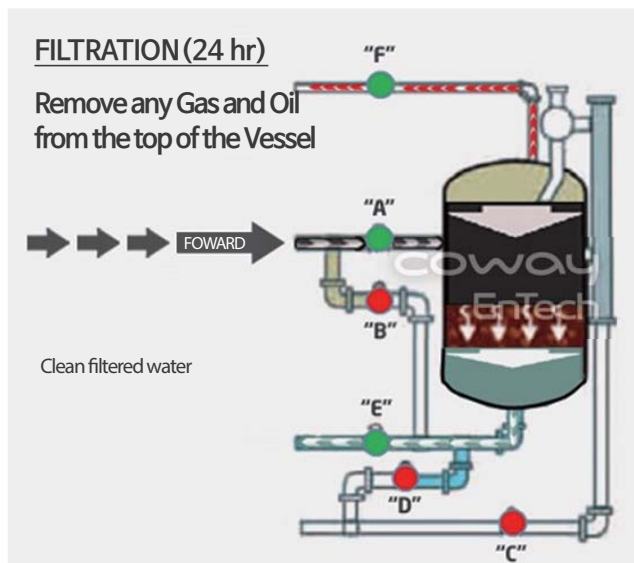
Nutshell is used as filtration to remove small residue of oil in the water. Generally filtration and backwash process is run automatically.

FEATURES

Hydrophilic nutshell filtration

- Nutshell is hydrophilic filtration and creates layers on the surface. Oil components are captured in the layers and removed during final back-wash process.

PROCESS



APPLICATION

Nutshell Filter

